



167 Laboratory equipment

- 168-170 Presentation of the range
- 171-176 Low furniture without worktop
 - 177 Rounded-edge work tops
 - 178 Brackets; Hanging frames and wall panels
 - 179 Catering sinks and wall cupboard set; Panel with hooks
- 180-181 Wall furniture
 - 182 Bakery furniture "Parisien"
 - 183 Bakery tables

184 Bread slicers

- 184 Semi-auto table bread slicer
- 185 Table bread slicers; Table breadslicer for baguette or buns
- 186 Range Byzance
- 187 Duo breadslicers; Self service breadslicer

LABORATORY EQUIPMENT BREAD SLICERS

Laboratory equipment



Bread slicers



SCAN ME and download
all the technical datasheets of the range!

Create to suit your needs!

Our furniture range lets you design a bakery lab space that reflects you:

- Base units without a worktop, so you can choose your preferred worktop material: wood, stainless steel or granite
- Sliding doors or hinged doors for optimised storage
- A scalable, step-by-step layout solution
- Smart combinations of modular elements
- Practical and ergonomic innovations



Complete range of modular furniture

Low furniture without worktop



HINGED DOORS
page 171



SLIDING DOORS
page 172



RECEIVING PASTRY
page 172



DRAWERS
pages 173-174



TROLLEYS
page 175

Organise your space as you need by combining several units and a work surface (page 177) :



COMBINATION



CENTRAL ISLANDS

Wall furniture - Wall storage



HINGED DOORS
page 180



SLIDING DOORS
page 181



PANELS, BRACKETS
page 178



Bakery furniture "Parisien" Bakery tables

pages 182-183



Optional coloured doors



- Epoxy powder coating paint sprayed on by electrostatic spray gun
- 2 finishes available: matt or glossy
- Stainless anti-corrosion quality conserved

Ref.	
MEU-COLOR	Extra cost according to the dimensions and the number of doors to be paint



Choice of over 200 colours!
(RAL colour chart)

Customize your bakery lab to make it more nice and inspiring!



Our SOFINOR modular furniture for bakery labs is designed for stainless steel work tops (page 177), but you can also have work tops in wood, granite or marble ordered by you to your local supplier. We can adapt our modular furniture to receive your granite or marble worktop.

Ergonomics

- Stand-off handles for easy gripping
- Fully opening drawers, can be removed without tools
- Soundproofed double doors to limit noise nuisance on opening and closing
- Inclinable drawers for ingredients allowing a better ergonomics of work and to avoid any congestion of the work top
- Plexi Glass windows to see the level of the ingredients

Hygiene

- Triple folded dropped edges to ensure perfect work top cleaning
- Slope backrest to avoid the stagnation of liquids and to avoid mould on the work top
- Stand-off handles for easy cleaning
- Suspended doors without rail on the bottom of the cabinet for an easy cleaning

Safety

- All stainless AISI 304L, proven and recognised for its qualities in a catering environment
- Optional locks for the security of your equipment or raw materials
- Rounded edges to avoid sharp angles. The bottom of the cabinets are strengthened with omega rails for a better rigidity
- The backs of low units reinforced with omegas for maximum rigidity



CREATE YOUR OWN COMPOSITION!

Compose yourself a combination, adding the items pages 171 to 176 and the top page 177.



+



+



+



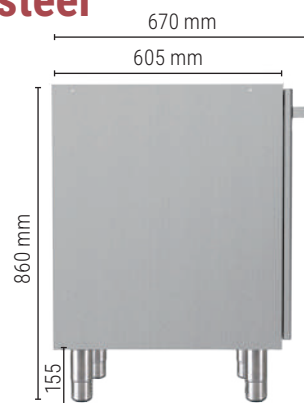
=



Low furniture without worktop, all AISI 304L stainless steel

- Entirely in AISI 304L stainless steel
- Handles: in tubular all AISI 304L stainless steel
- Adjustable inner shelf
- Feet: Ø 60 mm in stainless steel (adjustable 50 mm), or castors Ø 125 mm, zinc coated (2 with brake)
- Doubled hinged doors (with vertical edges rounded) or doubled sliding doors
- Drawers: on stainless steel slides, with full opening

- Separate modules delivered without work top (see page 177)
- Height without work top: 860 mm - Height with work top: 900 mm
- Maximum load: 75 kg



i To facilitate the cleaning of the floors, suggest our low furniture on castors

1 hinged door - Length 450 mm



H 860 - Width 605 (mm)		ON STAINLESS STEEL FEET	ON ZINC COATED CASTORS
Designation	Kg	Ref.	Ref.
1 hinged door (right hinge)	23.5	MBU1P	MBU1PR
1 hinged door (left hinge)	23.5	MBU1PG	MBU1PGR
1 hinged door* + 1 drawer 120 mm deep	45.5	MBU1PT	MBU1PTR

* No inner shelf

2 hinged doors - Length 900 mm



H 860 - Width 605 (mm)		ON STAINLESS STEEL FEET	ON ZINC COATED CASTORS
Designation	Kg	Ref.	Ref.
2 hinged doors	36	MBU2P	MBU2PR
2 hinged doors* + 2 drawers 120 mm deep	37	MBU2PT	MBU2PTR

* No inner shelf

3 hinged doors - Length 1350 mm



H 860 - Width 605 (mm)		ON STAINLESS STEEL FEET	ON ZINC COATED CASTORS
Designation	Kg	Ref.	Ref.
3 hinged doors	65	MBU3P	MBU3PR

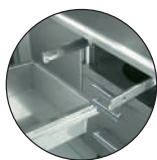


OPTION: LOCK

For hinged door and/or drawer
Please notify at the order

Ref.

MEUCLE



- Double panel doors
- Prominent handles
- Stainless steel handles and feet
- Drawers can be easily removed without tools

Low furniture without worktop, all AISI 304L stainless steel

2 sliding doors



MBUG1



MBUG2



MBUG3



Hygiene : Suspended doors without lower rail (easy to clean)



H 860 - Width 635 (mm)

Designation	Length mm	Kg	ON STAINLESS STEEL FEET	ON ZINC COATED CASTORS
			Ref.	Ref.
2 sliding doors	900	36	MBUG1	MBUG1R
	1350	54	MBUG2	MBUG2R
	1800	72	MBUG3	MBUG3R



OPTION: LOCK

For sliding door
Please notify at the order

Ref.

MEUCLE

Special furniture receiving pastry trays

- Slides for 400 x 600 mm trays



MBUP1



MBUP1F



MBUP2



MBUP2F



Space between each runner = 62 mm

H 860 - Width 605 (mm)

Designation	Length mm	Kg	ON STAINLESS STEEL FEET	ON ZINC COATED CASTORS
			Ref.	Ref.
No door (1 x 8 levels)	450	23	MBUP1	MBUP1R
1 hinged door (1 x 8 levels)	450	25	MBUP1F	MBUP1FR
No door (2 x 8 levels)	900	39	MBUP2	MBUP2R
2 hinged doors (2 x 8 levels)	900	42	MBUP2F	MBUP2FR



Ergonomics: Prominent handles for better grip
Hygiene: Stainless steel handles and feet



Low furniture without worktop, all AISI 304L stainless steel

Drawers - Length 450 mm

- Removable
- Mounted on telescopic stainless steel runners



MBU2T

H 860 - Width 605 (mm)		ON STAINLESS STEEL FEET	ON ZINC COATED CASTORS
Designation	Kg	Ref.	Ref.
2 drawers 285 mm deep	34	MBU2T	MBU2TR



MBU3T

H 860 - Width 605 (mm)		ON STAINLESS STEEL FEET	ON ZINC COATED CASTORS
Designation	Kg	Ref.	Ref.
3 drawers 175 mm deep	46	MBU3T	MBU3TR



MBU3TC

H 860 - Width 605 (mm)		ON STAINLESS STEEL FEET	ON ZINC COATED CASTORS
Designation	Kg	Ref.	Ref.
2 drawers 175 mm + 1 drawer 120 mm deep + 1 leaf with hole	43.5	MBU3TC	MBU3TCR



Leaf with hole

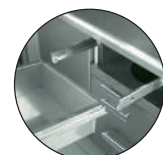


MBU3TP

H 860 - Width 605 (mm)		ON STAINLESS STEEL FEET	ON ZINC COATED CASTORS
Designation	Kg	Ref.	Ref.
2 drawers 175 mm + 1 drawer 120 mm deep + 1 leaf	43.5	MBU3TP	MBU3TPR



Hygiene: Stainless steel handles and feet
Ergonomics: removable drawers, can be easily removed without any tool



Low furniture without worktop, all AISI 304L stainless steel

Drawers - Length 450 mm



MBU4T

H 860 - Width 605 (mm)		ON STAINLESS STEEL FEET	ON ZINC COATED CASTORS
Designation	Kg	Ref.	Ref.
4 drawers 120 mm deep	49	MBU4T	MBU4TR



MBUCT

H 860 - Width 605 (mm)		ON STAINLESS STEEL FEET	ON ZINC COATED CASTORS
Designation	Kg	Ref.	Ref.
1 compartment for bottles + 1 drawer 175 mm deep	34.5	MBUCT	MBUCTR

Drawers - Length 900 mm

- Element composed of 2 big drawers for big sized accessories



Drawer 285 mm deep



Special big size



MBUD2T

H 860 - Width 605 (mm)		ON STAINLESS STEEL FEET	ON ZINC COATED CASTORS
Designation	Kg	Ref.	Ref.
2 drawers 285 mm deep	51	MBUD2T	MBUD2TR



OPTION: LOCK

For drawer
Please notify at the order

Ref.

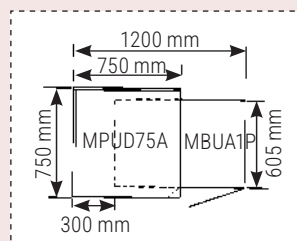
MEUCLE

Complete corner cabinet - 1 hinged door - Length 900 mm



MBUA1P

H 860 - Width 605 (mm)		
Designation	Kg	Ref.
Door on left side	36.5	MBUA1PG



Total bulk of complete corner cabinet set up with work top (page 177)

Low furniture without worktop, all AISI 304L stainless steel

Flour trolleys



MBUCF

Designation	Height 840 L x W mm	Kg	Ref.
Flour trolley 70 kg with lid without guide	450 x 675	25.5	MBUCF
Flour trolley 70 kg with partition and lid without guide	450 x 675	28	MBUCFS

Height without front panel: 800 + 15 for lid handle



MBU2CF

OPTIONS FOR MBUCF AND MBUCFS	Kg	Ref.
Guide for 1 trolley	7	MBU1CF
Guide for 2 trolleys		MBU2CF
Guide for 3 trolleys		MBU3CF



MBUCFR

Designation	L x W x H mm	Kg	Ref.
Flour trolley with rounded vat and lid, rounded facade	365 x 615 x 715	26	MBUCFR

Trash cabinet with tilting door with easy knee opening



MBUB1R opened

- 1 tilting door: opening and closing by light pressure on the knee. Clever click-click system of pushunlock latch.
- No handle
- Stainless steel feet or zinc coated castors.
- Delivered with 1 grey polypropylene waste bin 26 Liters (LMPBP)
- Can also be placed under a tank (space saving guaranteed. Contact us)



- Practical knee opening and closing system
- Complies with HACCP principles, no hand contact with the bin



MBUB1R closed

Designation	L x W x H mm	Kg	ON STAINLESS STEEL FEET	ON ZINC COATED CASTORS
			Ref.	Ref.
Trash cabinet with tilting door	450 x 605 x 860	25	MBUB1	MBUB1R

Dustbin bag trolley



MBUCP

Designation	L x W x H mm	Kg	Ref.
Dustbin bag trolley	450 x 635 x 840	16.5	MBUCP

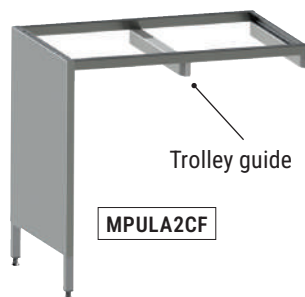
Low furniture without worktop, all AISI 304L stainless steel

All stainless side legs without trolley guide



Designation	Kg	Ref.
Side legs for 1 trolley	9	MPULA1
Side legs for 2 trolleys	10	MPULA2
Side legs for 3 trolleys	11	MPULA3

All stainless side legs with trolley guide



Designation	Kg	Ref.
Side legs + guide for 1 trolley	9.5	MPULA1CF
Side legs + guide for 2 trolleys	10.5	MPULA2CF
Side legs + guide for 3 trolleys	11.5	MPULA3CF

Bottle-storage furniture



- Feed-function
- With cutlery support on the top part
- 2 stainless steel feet

+ Ideal for filling gaps

L x W x H mm	Kg	Ref.
250 x 670 x 860	20	MBUCT25

Stainless filler panels and skirting

+ Ideal for filling gaps

Designation	Ref.
Stainless low filler panel - From 50 to 200 mm	MBUFIL
Stainless skirting for low furniture - fixed price for the side	MOPT02C
Stainless skirting for low furniture - per metre for the front	MOPT02F

Rounded edges work tops

- Work top entirely in AISI 304L stainless steel, 1.5 mm thickness 10 mm front curve and 8,5 mm rear curve
- High rigidity thanks to melaminated panel double face, thickness 19 mm
- Front curve dropped 40 mm

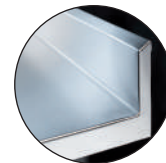
Central work tops:

- Rounded edges on both lengths

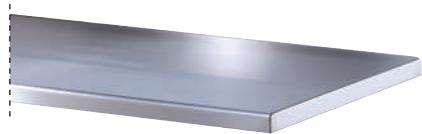
To be put on the low furniture from pages 171 to 176

Work tops to be put against a wall:

- Rounded edges on the front
- Rear backsplash 100 x 20 mm, sloping at 30°, with a 10 mm radius at the base



Central work tops



L x W mm	Kg	Ref.
450 x 750	11	MPU0704
900 x 750	22	MPU0709
1350 x 750	33	MPU0713
1800 x 750	44	MPU0718
2250 x 750	55	MPU0722
2700 x 750	66	MPU0727

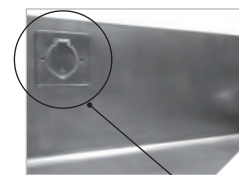
Work tops with backrest



L x W mm	Kg	Ref.
450 x 750	11.5	MPUD704
900 x 750	23	MPUD709
1350 x 750	34	MPUD713
1800 x 750	46	MPUD718
2250 x 750	57	MPUD722
2700 x 750	68	MPUD727



Hygiene:
30° sloping backsplash to prevent liquid build-up



MPUDH24 + MPUDHPC

HIGH BACKREST OPTION

Rear backrest 240 x 80 mm, with radiated base and flat top. Rear closed.

Price per ml (Take 1 ml for top less than 1 ml)

Socket outlet* with stainless steel finish - MONO 16A 250V - Not wired

Adaptation* for PLARMQT3 wall-mounted tap (Tap to be added)

Wall twin-hole tap - Spout length 250 mm swivel from above

Soldered sink 400 x 400 x 250** with plug and overflow pipe

* Only available with backrest MPUDH24

** Please notify the position at the order

Ref.

MPUDH24

MPUDHPC

MPUDHROB

PLARMQT3

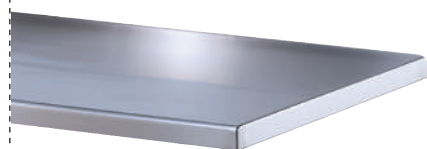
OPLC44

Corner work top 2 backrest



L x W mm	Kg	Ref.
750 x 750	26	MPUD75A

Wide central tops



L x W mm	Kg	Ref.
1350 x 1350	59	MPU1313
1800 x 1350	78	MPU1318
2250 x 1350	98	MPU1322
2700 x 1350	118	MPU1327



To have the holes to fix a supporting structure into the top, add a P at the end of reference. Example : MPU1313P

Top with sink

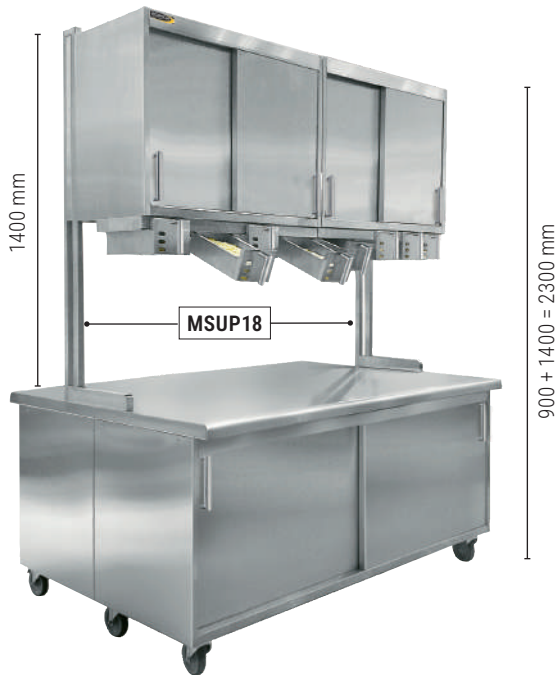
- Sink: 600 x 450 x 300 mm
- Non-drip edges - Smooth drainer

- With tap hole Ø 31 mm
- Supplied with plug, simple overflow pipe and PVC U bend



L x W mm	Kg	SINK ON THE RIGHT	SINK ON THE LEFT
		Ref.	Ref.
1350 x 750	21	MPUL713	MPUL713CG

Brackets



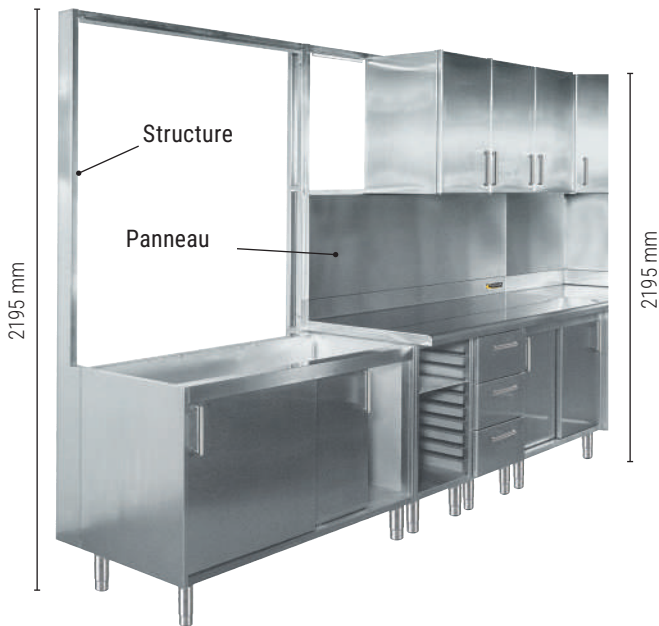
- Full AISI 304L stainless steel
- To be screwed on the worktop

L mm	Kg	Ref.
1350	13	MSUP13
1800	16	MSUP18
2250	19	MSUP22
2700	25.5	MSUP27



To suspend on the wall furniture (on one side) and the panel with hooks (on the other side) above your central island

Hanging frames and wall panels



Hanging frames

- Full AISI 304L stainless steel
- To be fitted on the worktop



Practical for weak walls

L mm	Kg	Ref.
900	20	MSUCR09
1350	21.6	MSUCR13



To suspend wall furniture on the wall, even if the wall is fragile

Wall panels

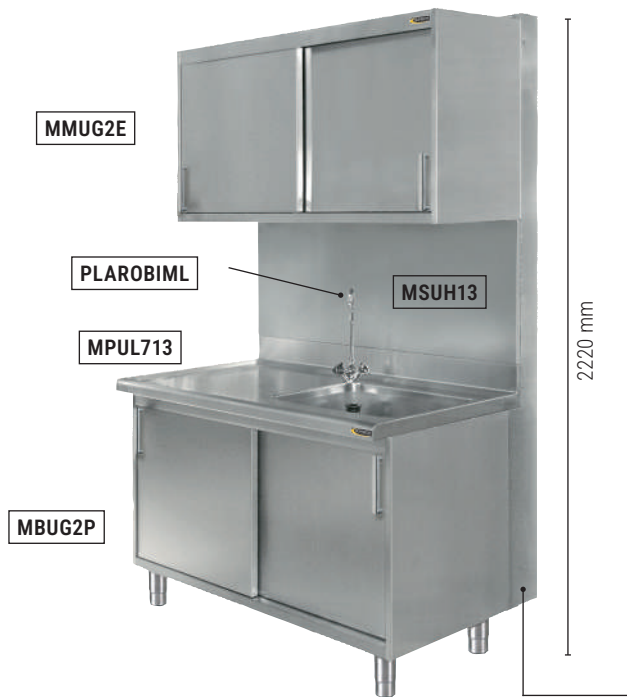
- Full AISI 304L stainless steel
- H. 500 mm
- To clad the wall between high and low furniture: **protection and easy cleaning**

L mm	Kg	Ref.
900	17	MSUH09
1350	25	MSUH13
1800	34	MSUH18
2250	42	MSUH22
Angle : 750 + 750	17	MSUCRAH*

*= frame + wall panel



Catering sinks and wall cupboard set



- Full AISI 304L stainless steel

Composed of	Kg	Ref.
1 work top* with backrest and sink 600 x 450 x 300 mm	21	MPUL713
1 low furniture 1350 x 600 x 850 mm With rear opening for the piping	54	MBUG2P
1 drainage wall cupboard 1350 x 450 x 695 mm	54	MMUG2E

THE SET (without tap): **5 437 euros H.T.**

* With tap hole \varnothing 31 mm
Smooth drainer
Non-drip edges

Option:

Designation	Kg	Ref.
Structure	21.6	MSUCR13
Stainless steel panel	25	MSUH13

Panel with hooks



- Full AISI 304L stainless steel
- Length of hooks: 200 mm
- Height of panel: 600 mm

L mm	Number of hooks	FOR BRACKETS		WALL PANEL	
		Kg	Ref.	Kg	Ref.
900	11	-	-	6.1	MSUPCM09
1350	17	10	MSUPC13	9.1	MSUPCM13
1800	23	14	MSUPC18	12	MSUPCM18
2250	28	17	MSUPC22	-	-
2700	32	20	MSUPC27	-	-



To hang utensils



Wall furniture

- Entirely in AISI 304L stainless steel
- Handles : in AISI 304L stainless steel tube
- Adjustable inner shelf
- Hinged doors (with vertical rounded edges) or suspended sliding doors (no low rails)
- Ingredient containers with visible level (capacity: 4 liters). Dimensions 160 x 300 x H 80 mm
- For draining furniture: perforated inner shelf and bottom



Hinged doors

- **Hygiene:** stainless steel handles
- Windows to see the level of the ingredients



MMU1P

Designation	L x W x H mm	Kg	Ref.
1 hinged door	450 x 450 x 695	24	MMU1P



MMU2P

Designation	L x W x H mm	Kg	Ref.
2 hinged doors	900 x 450 x 695	33	MMU2P
Option: 4 ingredients containers under MMU2P		5	MMUB1



MMUB1



MMU3P

Designation	L x W x H mm	Kg	Ref.
3 hinged doors	1350 x 450 x 695	50	MMU3P
Option: 6 ingredients containers under MMU3P		10	MMUB2



MMUB2



MMUA1P

Designation	L x W x H mm	Kg	Ref.
Angle furniture 1 hinged door	(750+750) x 450 x 695	32.4	MMUA1P



OPTION: LOCK

For hinged door
Please notify at the order

Ref.

MEUCLE

Wall cabinets

Sliding doors



MMUG1



Hygiene:
No low rails
Stainless steel handles

Designation	L x W x H mm	Kg	Ref.
2 sliding doors	900 x 450 x 695	36.5	MMUG1
Option: 4 ingredients containers under MMUG1		5	MMUB1



MMUB1



MMUG2

Designation	L x W x H mm	Kg	Ref.
2 sliding doors	1350 x 450 x 695	54	MMUG2
Option: 6 ingredients containers under MMUG2		10	MMUB2



MMUB2

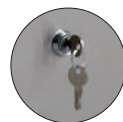


MMUG3

Designation	L x W x H mm	Kg	Ref.
2 sliding doors	1800 x 450 x 695	73	MMUG3
Option: 8 ingredients containers under MMUG3		15	MMUB3



MMUB3



OPTION: LOCK

For sliding door
Please notify at the order

Ref.

MEUCLE

Draining furniture



MMUG2E



To be put over
a catering sink

- Perforated shelf and bottom

Designation	L x W x H mm	Kg	Ref.
2 sliding doors, perforated shelf and bottom	1350 x 450 x 695	54	MMUG2E

Stainless steel small furniture



MMU1P25



Ideal for filling gaps

Designation	L x W x H mm	Kg	Ref.
1 hinged door, 1 inner shelf	250 x 450 x 695	24	MMU1P25

Stainless steel sheet

Length mm	Ref.
from 50 to 200	MMUFIL

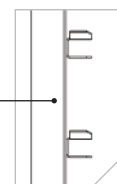


Ideal for filling gaps

Bakery furniture "Parisien"

- In stainless steel AISI 304L
- Entirely closed
- Beech wood work top (42 mm)
- Front door adjustable, sliding under the top

- On castors
- With or without drawer for cereals
- 5 sliding levels 105 mm apart of each other
- For wooden planks 900 x 700 x H 15mm thick or stainless steel grids 800 x 600 mm (optional)



Parisian furniture without sliding side tablet



MBP10R + (4 x MBP10PL)

Designation	L x W x H mm	Kg	Ref.
On castors	997 x 800 x 900	71	MBP10R

Shipping within 48h



Separate cabinet on castors.
Ideal for making special breads.



MBP10TR

Designation	L x W x H mm	Kg	Ref.
On castors with drawer for cereals and seeds	997 x 800 x 900	72	MBP10TR



DRAWER WITH ADJUSTABLE PARTITION

Parisian furniture with sliding side tablet



MBP10TGR + (5 x MBP10PL)

Designation	L x W x H mm	Kg	Ref.
On castors with sliding tablet on the right side	997 x 800 x 900	75	MBP10TDR
On castors with sliding tablet on the left side	997 x 800 x 900	75	MBP10TGR

Accessories and option

ACCESSORIES	L x W x H mm	Kg	Ref.
15 mm thick wood panel (per unit)	900 x 700 x 15	4	MBP10PL
Stainless steel grid* 800 x 600	800 x 600		GP68X

* Option sold only with pair of slides bayonet fitting

Shipping within 48h

Mixed storage adaptation with bayonet runners for compatibility with 900 x 700 mm wood boards and / or 800 x 600 mm stainless steel grids



OPTION	Ref.
EXTRA COST for pair of slides "bayonet fitting" to fit with 800x600 mm entry plates or griddles 800x600 mm (option sold only for the purchase of a parisien cabinet)	SEMBP176

Bakery tables

Table



TH0814

- In AISI 304 stainless steel and 35x35 mm 35x20 mm tubes
- On polyamide castors (2 of them with brakes)
- Beech wood top, 42 mm thickness
- Width 800 mm

WIDTH 800

Height 900 L x W mm	ON FEET		ON CASTORS	
	Kg	Ref.	Kg	Ref.
1200 x 800	34	TH0812	34	TH0812RP
1400 x 800	38	TH0814	38	TH0814RP
1600 x 800	42	TH0816	42	TH0816RP
2000 x 800	51	TH0820	51	TH0820RP

Table with trolleys to carry flour bags



THE0816RP

TABLE: IDEM ABOVE

TROLLEY:

- In AISI 304L stainless steel and 25x25 mm tubes and 25 mm
- On castors (with 2 brakes)
- Designed to store and move 3 or 4 x 25 kgs flour bags - width 800 : 3 bags

WIDTH 800

Designation	Height 900 L x W mm	Kg	ON FEET	ON CASTORS
			Ref.	Ref.
Table + 2 trolleys CPS0804	1200 x 800	56	THE0812	THE0812RP
Table + 3 trolleys CPS0804	1600 x 800	75	THE0816	THE0816RP
Table + 4 trolleys CPS0804	2000 x 800	95	THE0820	THE0820RP



OUR BAKERY TABLES ALSO EXIST IN ADJUSTABLE HEIGHT VERSION - SEE PAGE 46



Trolleys to carry flour bags



CPS0804

Designation	L x W x H mm	Kg	Ref.
Trolley to carry flour bags for table width 800 mm	400 x 740 x 820	11	CPS0804

Create just as you want!

